

QUICK FACTS

APPLICATION

- Fence Post
- Swinging Gates
- Sliding Gates

MATERIALS

- 3/8" Copper Bracket
- Copper Braids
- Flexible Cables
- Stainless Steel Hardware

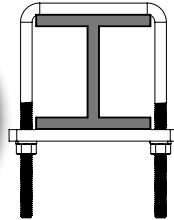
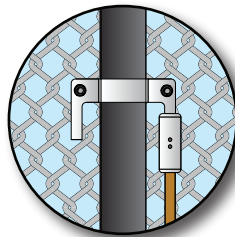
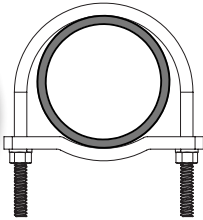
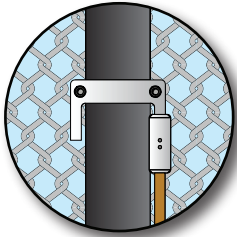
SIZES

- Tube: 1/4" - 12"
- Rod: 1/2" - 12-3/4"
- Rebar: 5-11

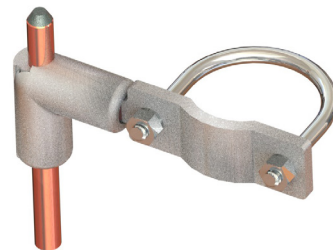
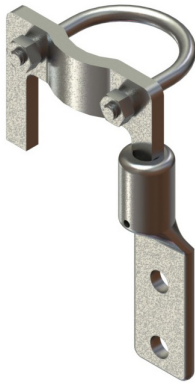
CONFIGURATIONS

- Left, Right and Dual Taps
- Round & Square Posts
- Tin Plating
- Variable Length Braiding
- Split Bolts available on assemblies
- Any Custom Options Available

FENCE POST CONNECTORS



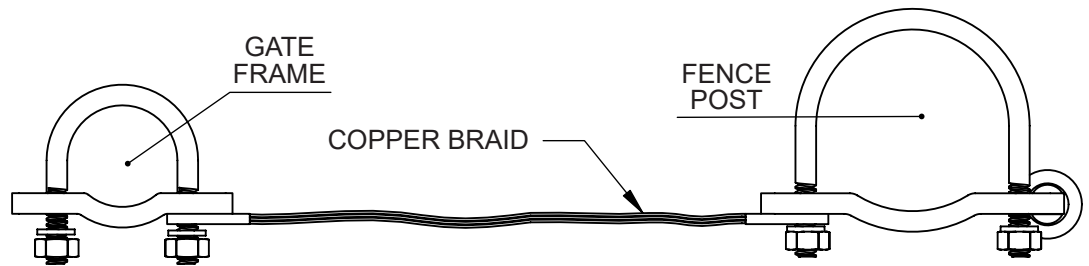
DMC Power will factory Swage any Ground connector in any size or configuration to our square or round post brackets to create a custom Fence Post connector



Base Bracket	With Connector Options:					
	Splice	Split Elbow	Offset Cross	Split Bolt	Parallel Splice	Terminal
GC771	GC760	GC763	GC774	GC761	GC764	GC765

SWINGING GATE CONNECTORS

Combining two Fence Post Connectors with your choice of pass-through or termination ground connectors and a DMC Power triple-layer copper braiding to adjoin the two connectors together, creates a flexible and long-lasting solution for your protective fencing.



Any Fence Post connector options from the previous page can be added



12" & 24" Triple Layer Copper Braid



Simple hex-nut installation

Splice	Split Elbow	Offset Elbow	Split Bolt	Parallel Splice	2-Hole Terminal
GC762	GC767	GC775	GC776	Call for Information	

PRODUCT FEATURES

- 5 minute permanent installation with standard hex-nuts, DMC Power Swage Tools & Go/No Go Inspection Gauges.
- Unlike exothermic, no hot work permit needed and no burn through spots. The cold connection does not create brittle points, does not compromise the post integrity and eliminates safety concerns.
- Tin Plating for galvanic protection as well as theft deterrence is standard with DMC Power fencing products.
- Attach fencing to the grid with pass-through or termination connectors for copper and copperclad cable, ropelay, copperclad rod or rebar.
- High performance connections qualified to IEEE837.

