

SWAGE TOOLING

- Up to 115 tons of 360° compression
- 7-10 times faster than crimp, welded, bolted or exothermic connections
- Consistent & repeatable push button operation
- Instantly inspectable with "Go/No-Go" Gauge
- Hydraulically operated with electric, gas or battery pumps; no open flames or gases
- Interchangeable Head Assemblies for maximum versatility
- Complete tooling as light as 24 lbs.
- Purchase and rental options available



BUS CABLE GROUNDING FULL TENSION SWAGE TOOLING

UNITED STATES HEADQUARTERS

623 East Artesia Blvd.
Carson, CA 90746
Toll Free: 888-SWAGE-NOW
Direct: 310-323-1616
Fax: 310-715-9488
sales@dmcpower.com

CANADIAN HEADQUARTERS

2075 Forbes Street, Unit B3
Whitby, Ontario, Canada L1N 9X1
Direct: 905-579-3000

REGIONAL OFFICES

Inventory, Training, Sales, Rental and Repair

EASTERN UNITED STATES

98 Quigley Blvd.
New Castle, DE 19720
Direct: 302-276-0303
Fax: 302-689-4649

NORTHERN CALIFORNIA

8413 Washington Blvd. Ste. 105
Roseville, CA 95678
Direct: 916-771-0431
Fax: 310-715-9488

DMC POWER

SUBSTATION & TRANSMISSION CONNECTOR SYSTEMS

Product Overview

888-SWAGE-NOW
www.DMCPower.com

SWAGING POWER

With more than 50 years of experience, DMC Power has perfected the Swage connection system for substations, transmission lines, wind and solar farms, and various industrial projects.

Our unique system is comprised of the highest quality connectors and the original 360° compression Swage Tool, which are used together to create the ultimate connection.

Customers around the world have trusted the DMC Power difference over other installation methods due to the distinct advantages of Swaging:

- SAFER
- FASTER
- REPEATABLE
- INSPECTABLE
- ALL-WEATHER
- HIGHER QUALITY
- TESTED & CERTIFIED
- LOWER TOTAL PROJECT COST

THE ORIGINAL SWAGE
THE LAST CONNECTOR SYSTEM
YOU WILL EVER NEED

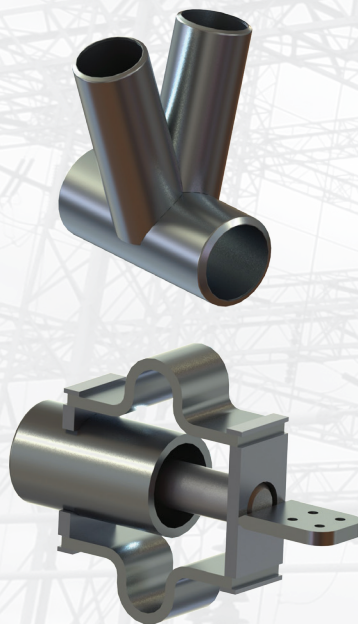


DMC Power Swage Tools and Connectors are engineered, tested and certified to only work together as a mated system.

BUS CONNECTORS

- Bus Connectors up to 6"
- Aluminum or copper material
- EHV ratings to 1000kV
- External fittings compatible with 40, 60, 80 & 120 schedules
- Includes factory applied antioxidant compound
- Non-standard and metric sizes available
- Custom configuration and designs for any application
- Meets or exceeds ANSI C119.4, IEEE 605 and NEMA CC1 standards

- o A-Frames
- o Couplers
- o Elbows
- o End Caps
- o Expansions
- o Grounding
- o Supports
- o Tees
- o Terminals



CABLE CONNECTORS

- AAC & ACSR conductors
- Aluminum or copper material
- EHV ratings to 500kV
- No bird-caging or bent connectors
- Pre-drilled inspection/weep hole
- Ropelay, copper, multiple cable barrels, non-standard & metric sizes available
- Custom configurations, designs and tin plating for any application
- Meets or exceeds ANSI C119.4 & NEMA CC1 standards

- o Bus-to-Cable
- o Grounding
- o Spacers
- o Splices
- o Supports
- o Tees
- o Terminals



GROUND CONNECTORS

- Copper Cable, Ground Rod & Rebar
- C11000 electrolytic, unrecycled copper
- Pre-drilled inspection/weep hole
- Tin plating available on all connectors
- Split and dual cable design available
- Custom configurations and designs for any application
- IEEE STD 837 & UL qualified

- o Crosses
- o Elbows
- o Fence Post
- o Gate Frame
- o Parallels
- o Splices
- o Tees
- o Terminals



FULL TENSION CONNECTORS

- AAC, ACSR, ACSS, ACSS TW & Static Wire
- 6000 series aluminum alloy
- EHV ratings to 765kV
- Single & Two-Stage applications
- Run Splices over the roller
- Custom configurations and designs
- 20% area of reduction
- 40% higher IACS rating
- 50% higher thermal conductivity rating
- 125°C Single Stage continuous operation rating
- Class "AA" Single Stage rating per ANSI C119.4
- o Deadends
- o Jumper Terminals
- o Splices
- o Taps
- o Tees

