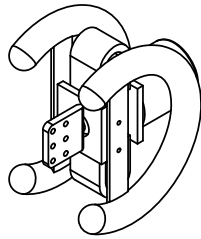
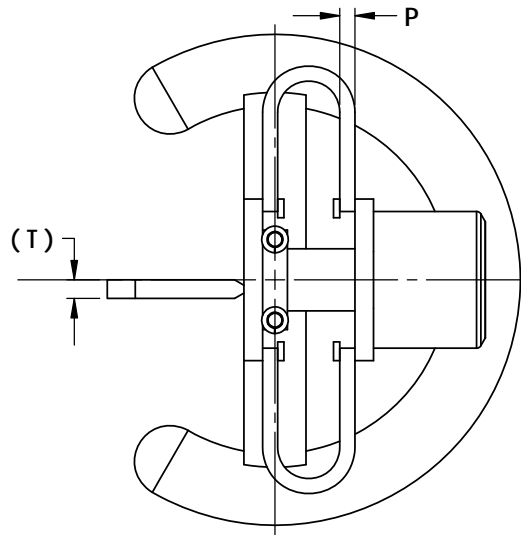
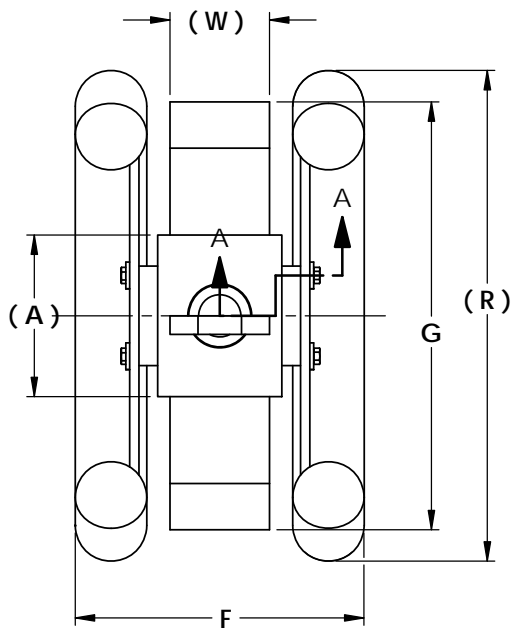
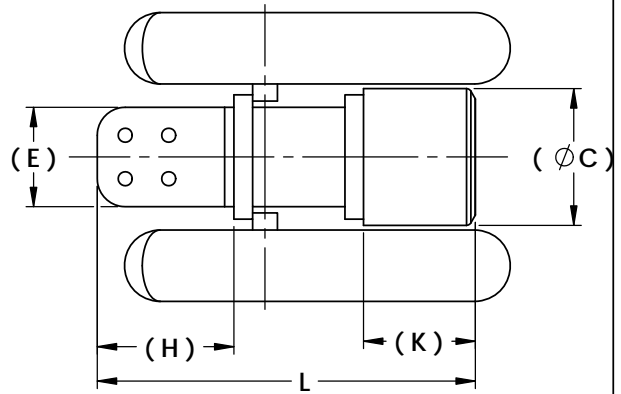


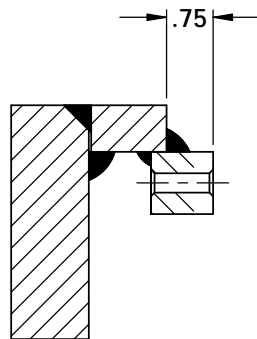
PLK3698D64E1



PLK3698D80E3-90



IN THIS VIEW
ONE CORONA RING
IS NOT SHOWN



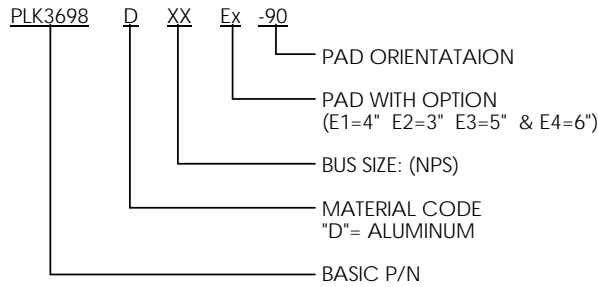
SECTION A-A

THIS DRAWING, AND THE INFORMATION CONTAINED HEREIN ARE THE PROPERTY OF DMC POWER AND SHALL NOT BE COPIED, REPRODUCED OR DISCLOSED WITHOUT EXPRESS AUTHORIZATION BY DMC POWER.

TABLE 1: AVAILABLE OPTIONS

POWERLOK ASSEMBLY PART NUMBER	PIPE SIZE (NPS)	(A)	(ØC)	(E)	F	G MAX	(H)	(K)	L ±.125	(n) LEAVES PER STACK	(P)	(T)	(R)	(W)
PLK3698D48E1	3"	6.50	4.38	4.00	10.62	16.83	5.00	4.20	13.53	13	.416	0.75	19.75	4.00
PLK3698D48E2				3.00					14.53					
PLK3698D48E3				5.00					6.00					
PLK3698D56E1	3-1/2"	6.50	5.00	4.00	10.62	17.02	5.00	4.40	13.92	16	.512	0.75	19.75	4.00
PLK3698D56E2				3.00					14.92					
PLK3698D56E3				5.00					6.00					
PLK3698D64E1	4"	6.50	5.50	4.00	11.87	17.22	5.00	4.50	14.72	19	.608	0.75	19.75	4.00
PLK3698D64E1-90				3.00					15.72					
PLK3698D64E2				5.00			6.00							
PLK3698D64E3				6.00			6.00							
PLK3698D80E1	5"	6.50	6.50	4.00	12.87	17.66	5.00	7.50	18.16	26	.832	1.00	19.75	4.00
PLK3698D80E2				3.00					19.16					
PLK3698D80E3				5.00			6.00							
PLK3698D80E4				6.00			6.00							
PLK3698D96E1	6"	8.00	8.00	4.00	14.37	18.72	5.00	8.00	18.22	19	0.61	1.25	19.75	4.00
PLK3698D96E4	6"	8.00	8.00	6.00	14.37	18.72	5.00	8.00	18.22	19	0.61	1.25	19.75	6.00

LEGEND



THIS DRAWING AND THE INFORMATION CONTAINED HEREIN ARE THE PROPERTY OF DMC POWER AND SHALL NOT BE COPIED, REPRODUCED OR DISCLOSED WITHOUT EXPRESS AUTHORIZATION BY DMC POWER.