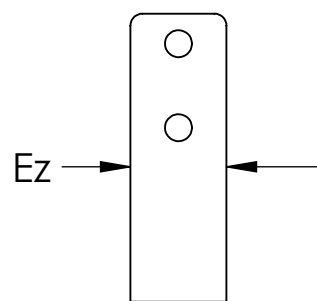
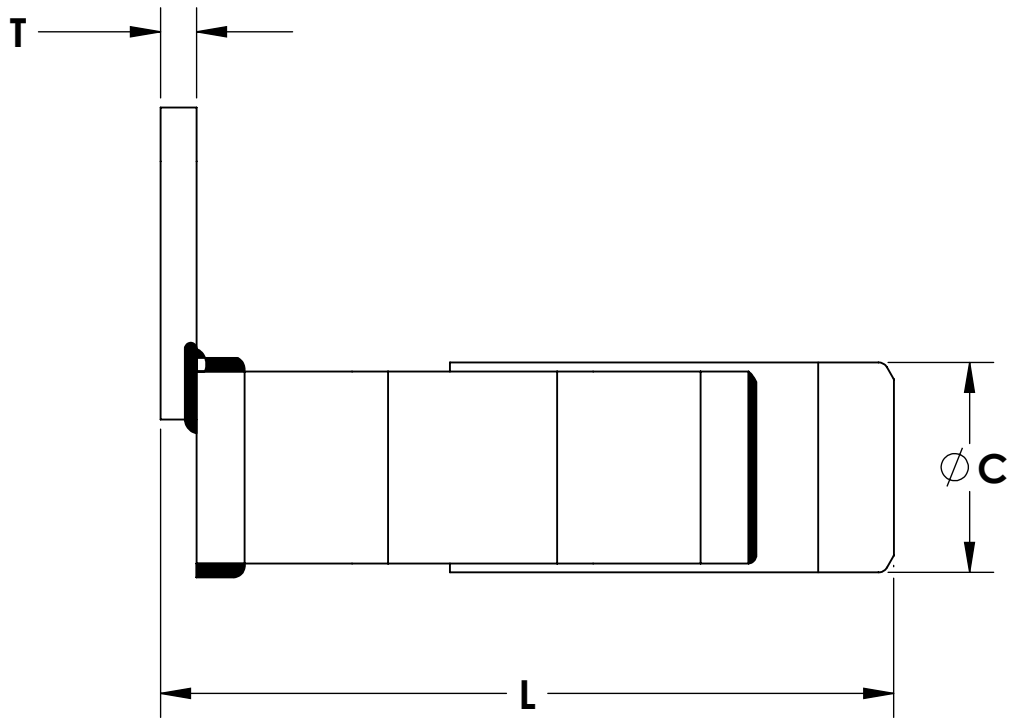
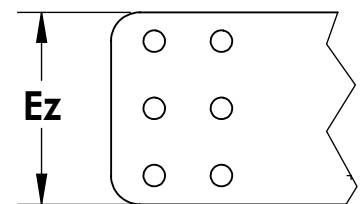


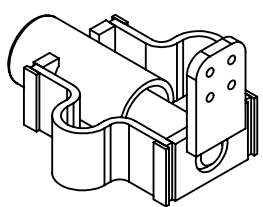
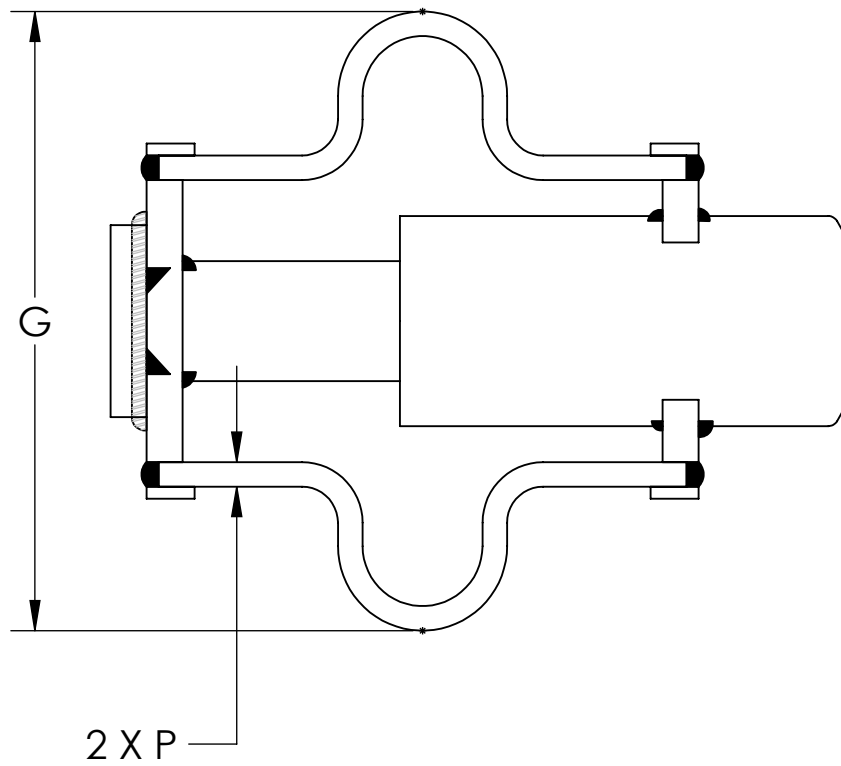
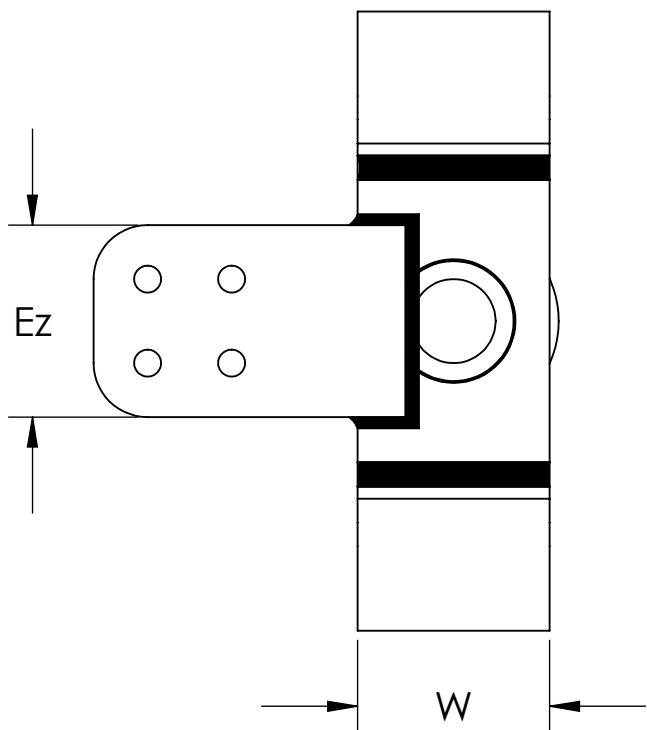
VIEW A
ASSEMBLY WITH 90° PAD
(PLK2601 D XX Ez -90)



**E0 PADS
HAVE 2 HOLES (NOT 4)**



**E3 AND E4 PADS
HAVE 6 HOLES (NOT 4)**

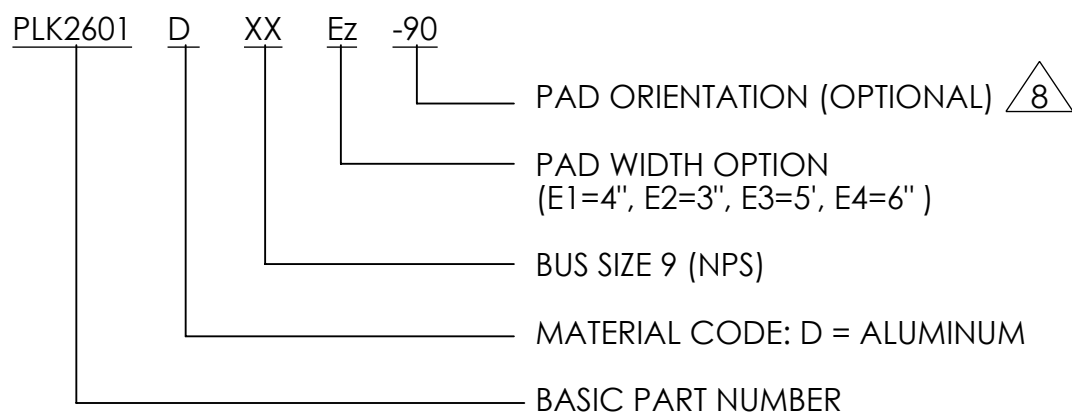


THIS DRAWING AND THE INFORMATION CONTAINED HEREIN ARE THE PROPERTY OF DMCPower AND SHALL NOT BE COPIED, REPRODUCED OR DISCLOSED WITHOUT EXPRESS AUTHORIZATION BY DMCPower.

TABLE: AVAILABLE OPTIONS

ASSEMBLY PART NUMBER	BUS SIZE	Ø C	PAD OPTION	Ez	G	L	P	T	W
PLK2601D16E1	1"	2.000	E1	4.000	9.884	14.905	.192	3/8"	2.000
PLK2601D16E2			E2	3.000					
PLK2601D24E1	1-1/2"	2.500	E1	4.000	10.576	15.030	.288	1/2"	2.000
PLK2601D24E2			E2	3.000					
PLK2601D32E0	2"	3.000	E0	2.000	11.332	15.030	.416	1/2"	2.000
PLK2601D32E1			E1	4.000					
PLK2601D32E2			E2	3.000					
PLK2601D40E1	2-1/2"	3.750	E1	4.000	11.890	15.155	.320	5/8"	4.000
PLK2601D40E2			E2	3.000					
PLK2601D40E3			E3	5.000					
PLK2601D48E1	3	4.375	E1	4.000	12.707	15.280	.416	3/4"	4.000
PLK2601D48E2			E2	3.000					
PLK2601D48E3			E3	5.000					
PLK2601D56E1	3-1/2	5.000	E1	4.000	13.524	15.280	.512	3/4"	4.000
PLK2601D56E2			E2	3.000					
PLK2601D56E3			E3	5.000					
PLK2601D56E4			E3	6.000					
PLK2601D56E1-9			E1	4.000					
PLK2601D64E1	4	5.500	E1	4.000	14.216	15.280	.608	3/4"	4.000
PLK2601D64E2			E2	3.000					
PLK2601D64E3			E3	5.000					
PLK2601D64E4			E4	6.000					
PLK2601D80E1	5	6.500	E1	4.000	15.664	18.530	.832	1"	4.000
PLK2601D80E2			E2	3.000					
PLK2601D80E3			E3	5.000					
PLK2601D80E4			E4	6.000					
PLK2601D80E1-90	5	6.500	E1	4.000	15.664	18.530	.832	1"	4.000
PLK2601D80E2-90			E2	3.000					
PLK2601D80E3-90			E3	5.000					
PLK2601D80E4-90			E4	6.000					

LEGEND



THIS DRAWING AND THE INFORMATION CONTAINED HEREIN ARE THE PROPERTY OF DMCPower AND SHALL NOT BE COPIED, REPRODUCED OR DISCLOSED WITHOUT EXPRESS AUTHORIZATION BY DMCPower.