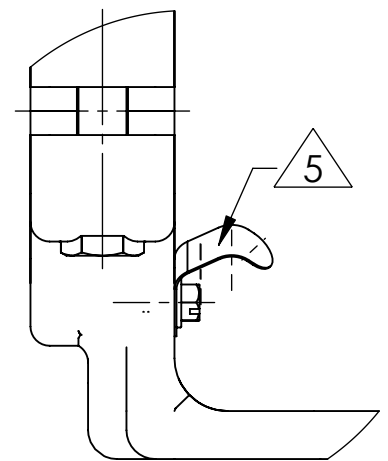
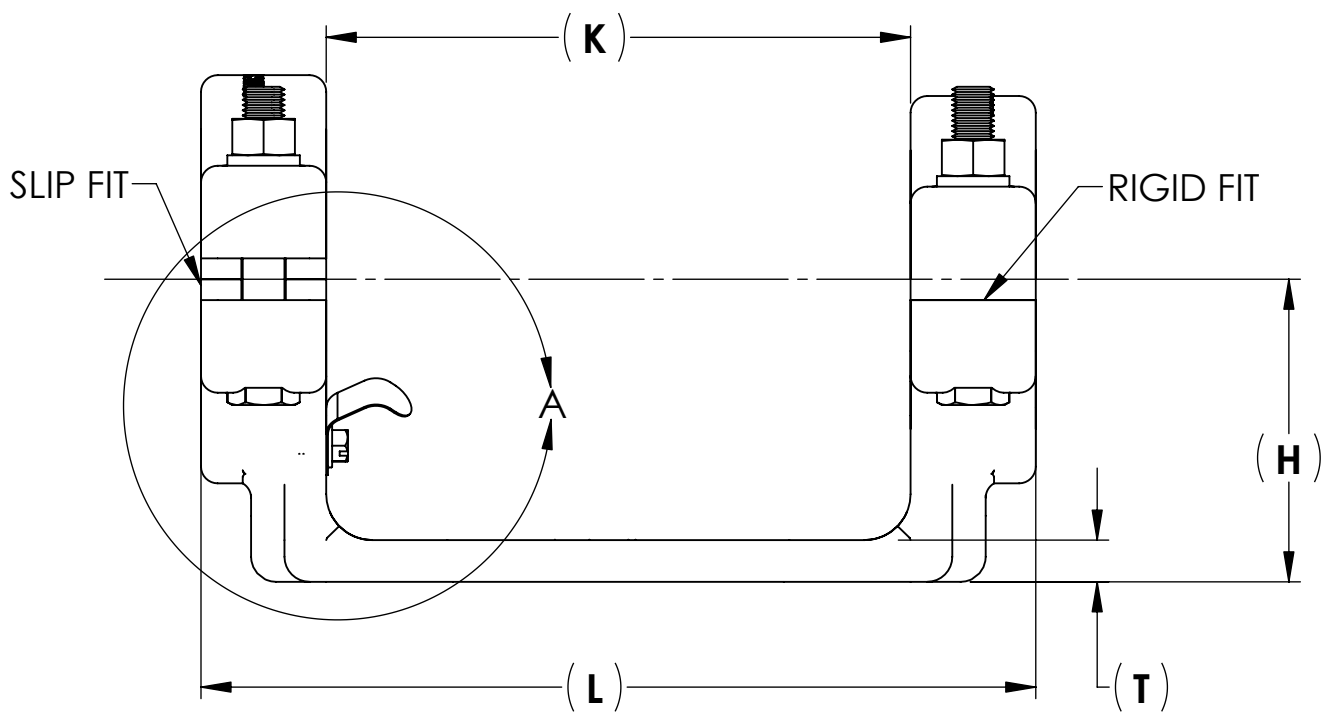
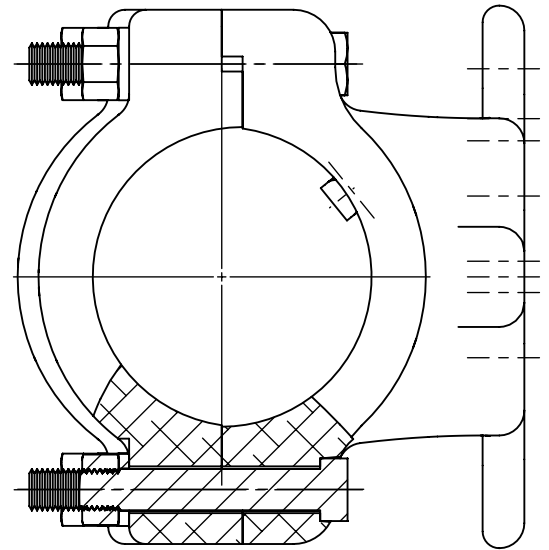
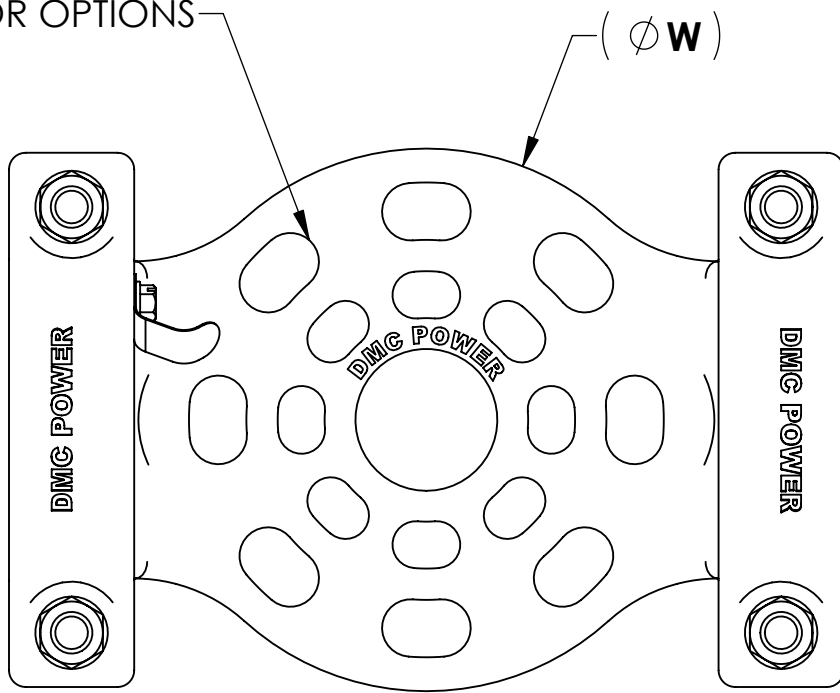


(8 X S)  
SEE TABLE 1  
FOR OPTIONS



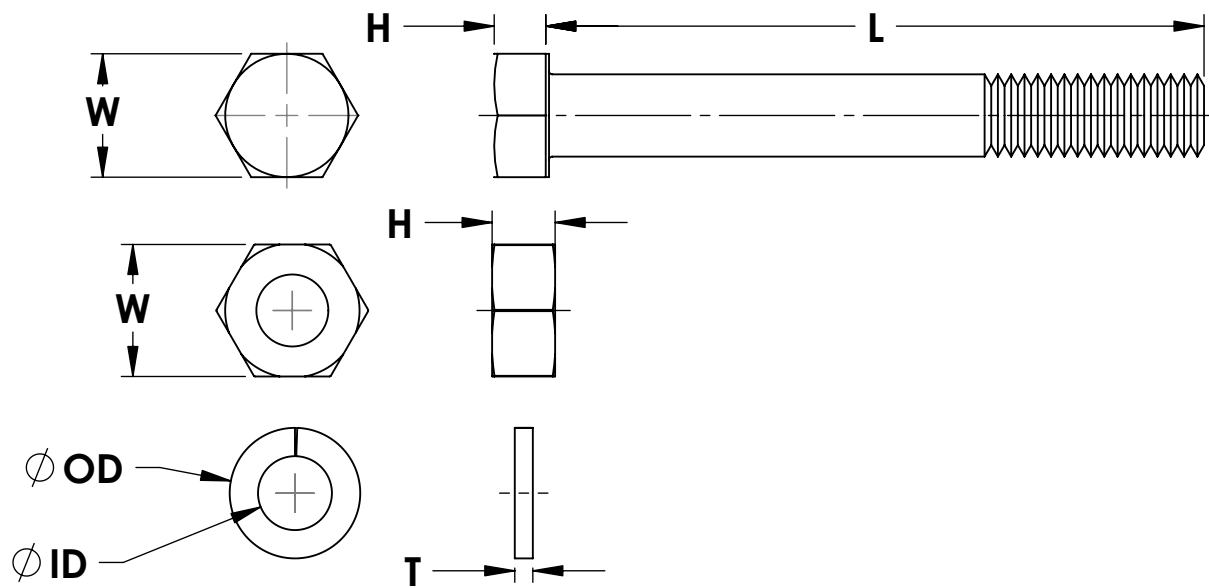
DETAIL A

THIS DRAWING AND THE INFORMATION CONTAINED HEREIN ARE THE PROPERTY OF DMCPOWER AND SHALL NOT BE COPIED, REPRODUCED OR DISCLOSED WITHOUT EXPRESS AUTHORIZATION BY DMCPOWER.

XX FOR REVISIONS - SEE SHEET 1

**TABLE 1: AVAILABLE OPTIONS**

POWERLOK ASSEMBLY PART NUMBER	VOLTAGE (kV)	PIPE SIZE (NPS)	DIMENSIONS IN INCHES						
			B.C.	(H)	(K)	(L)	(S)	(T) BASE THICKNESS	(W)
PLK2230D16E12	230	1"	3" & 5"	2.00	6.00	9.00	9/16" X 13/16" & 11/16" X 1-1/16"	0.50	5.50
PLK2230D24E12	230	1 - 1/2"	3" & 5"	2.50	6.00	9.00	9/16" X 13/16" & 11/16" X 1-1/16"	0.50	5.50
PLK2230D32E12	230	2"	3" & 5"	2.75	7.00	10.00	9/16" X 13/16" & 11/16" X 1-1/16"	0.50	6.50
PLK2230D40E12	230	2 - 1/2"	3" & 5"	3.13	7.00	10.00	9/16" X 13/16" & 11/16" X 1-1/16"	0.50	6.50
PLK2230D48E12	230	3"	3" & 5"	3.63	7.00	10.00	9/16" X 13/16" & 11/16" X 1-1/16"	0.50	6.50
PLK2230D56E12	230	3 - 1/2"	3" & 5"	4.00	7.00	10.00	9/16" X 13/16" & 11/16" X 1-1/16"	0.50	6.50
PLK2230D64E12	230	4"	3" & 5"	4.50	7.00	10.00	9/16" X 13/16" & 11/16" X 1-1/16"	0.50	6.50
PLK2230D80E23	230	5"	5' & 7"	5.00	9.40	11.50	11/16" X 1-1/16" & 13/16" X 1-1/2"	0.60	7.50
PLK2230D96E23	230	6"	5' & 7"	5.50	9.40	11.50	11/16" X 1-1/16" & 13/16" X 1-1/2"	0.60	7.50



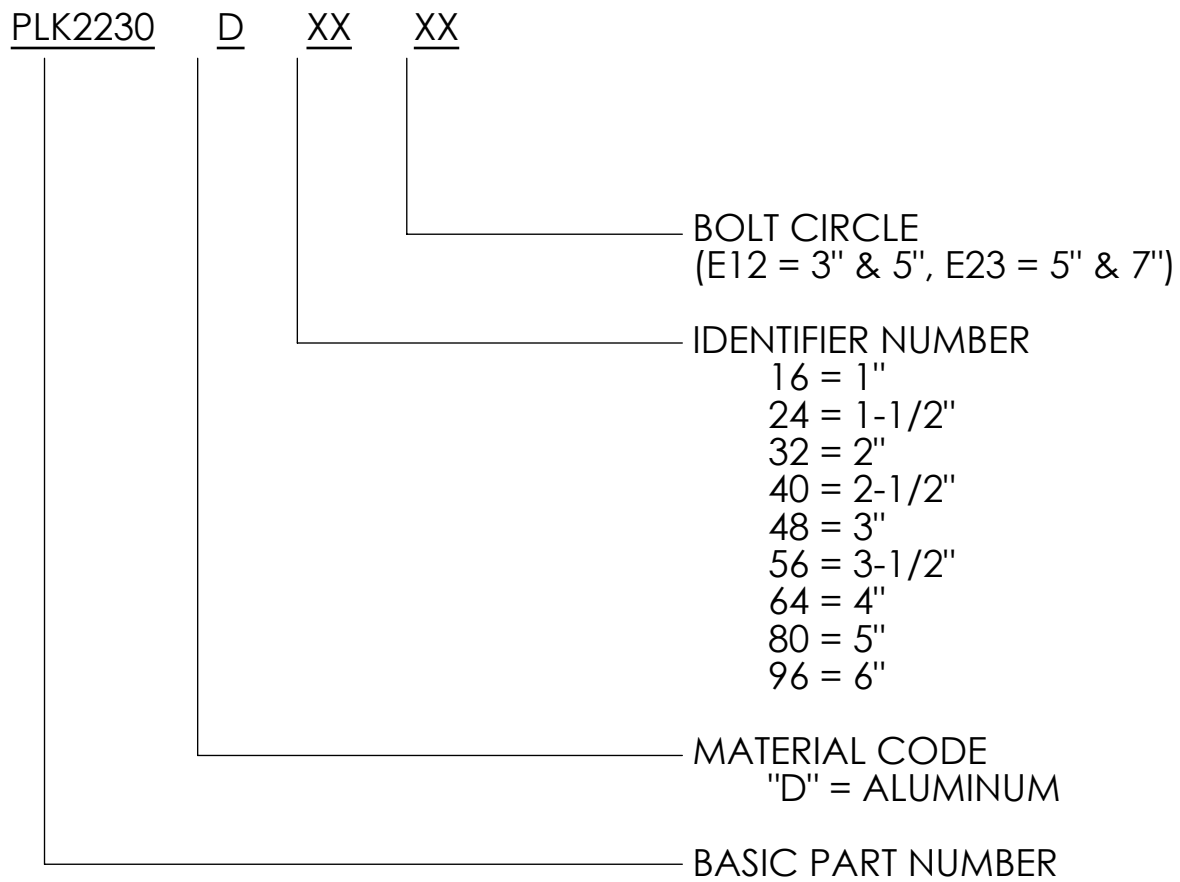
**TABLE 2: HARDWARE INFORMATION**

POWERLOK ASSEMBLY PART NUMBER	BOLT			NUT			WASHER			MATERIAL
	H	W	THREAD X L	H	W	THREAD	Ø OD	Ø ID	T	
PLK2230D16E12	15/64	9/16	3/8-16 UNC-2A X 2.25	21/64	9/16	3/8-16 UNC-2B	.68	.38	.09	18-8 STAINLESS STEEL
PLK2230D24E12			3/8-16 UNC-2A X 2.75			3/8-16 UNC-2B				
PLK2230D32E12	5/16	3/4	1/2-13 UNC-2A X 3.00	7/16	3/4	1/2-13 UNC-2B	.87	.50	.12	
PLK2230D40E12			1/2-13 UNC-2A X 3.50			1/2-13 UNC-2B				
PLK2230D48E12			1/2-13 UNC-2A X 3.50			1/2-13 UNC-2B				
PLK2230D56E12	25/64	15/16	5/8-11 UNC-2A X 5.00	35/64	15/16	5/8-11 UNC-2B	1.08	.63	.15	
PLK2230D64E12			5/8-11 UNC-2A X 6.00			5/8-11 UNC-2B				
PLK2230D80E23			5/8-11 UNC-2A X 6.50			5/8-11 UNC-2B				
PLK2230D96E23			5/8-11 UNC-2A X 7.50			5/8-11 UNC-2B				

THIS DRAWING AND THE INFORMATION CONTAINED HEREIN ARE THE PROPERTY OF DMCPOWER AND SHALL NOT BE COPIED, REPRODUCED OR DISCLOSED WITHOUT EXPRESS AUTHORIZATION BY DMCPOWER.

XX FOR REVISIONS - SEE SHEET 1

**LEGEND:**



**NOTES: (UNLESS OTHERWISE SPECIFIED)**

1. MATERIAL: ALUMINUM A356-76, PERMANENT MOLD
2. SUFFIX E12 DESIGNATES A 3" & 5" BOLT HOLE PATTERN  
SUFFIX E23 DESIGNATES A 5" & 7" BOLT HOLE PATTERN
3. DESIGNED FOR SLIP OR RIGID FIT APPLICATION
4. INSULATOR MOUNTING HARDWARE NOT INCLUDED, REFER TO PLK8010

△ 5 SPRING MATERIAL: 301/302 STAINLESS STEEL - SPRING TEMPERED

THIS DRAWING AND THE INFORMATION CONTAINED HEREIN ARE THE PROPERTY OF DMCPower AND SHALL NOT BE COPIED, REPRODUCED OR DISCLOSED WITHOUT EXPRESS AUTHORIZATION BY DMCPower.

XX FOR REVISIONS - SEE SHEET 1