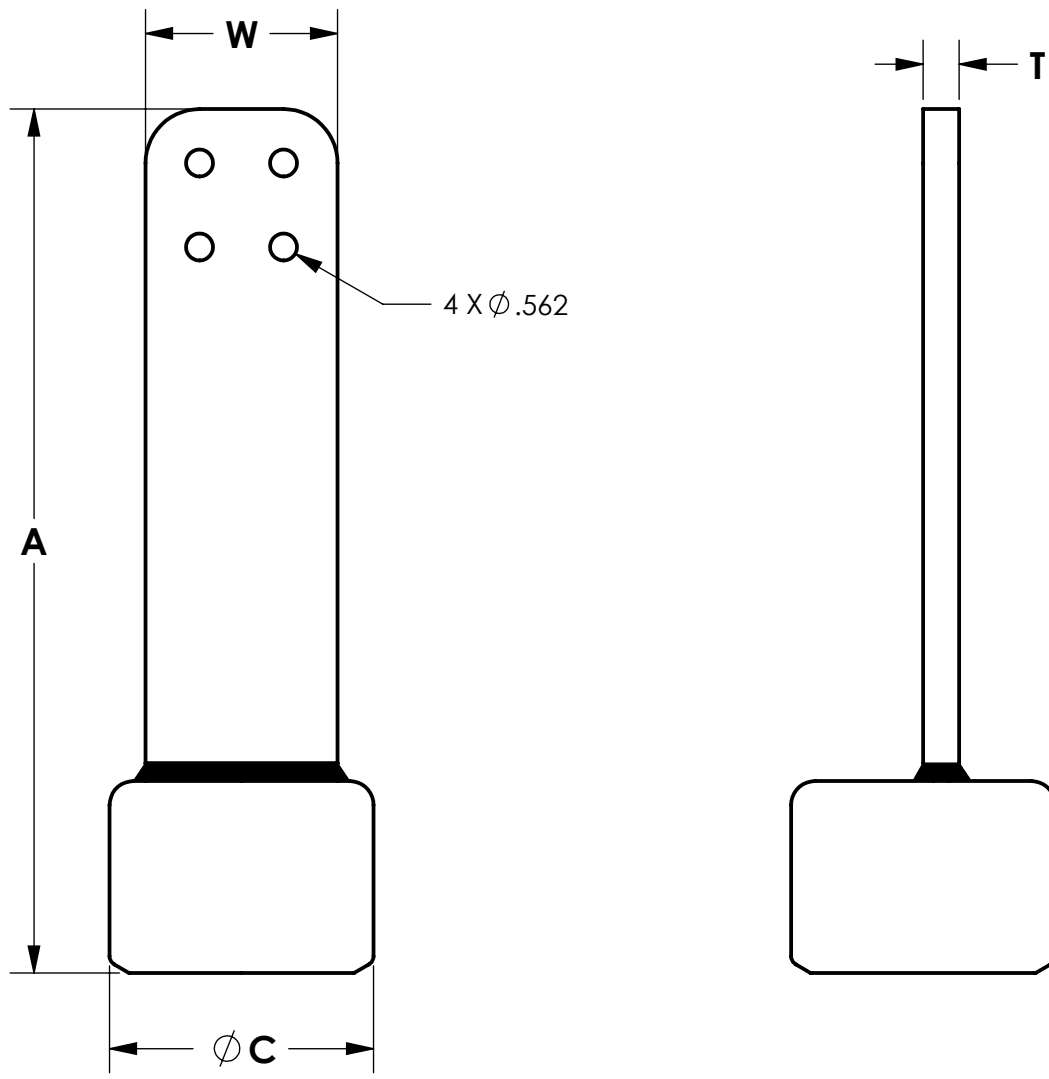
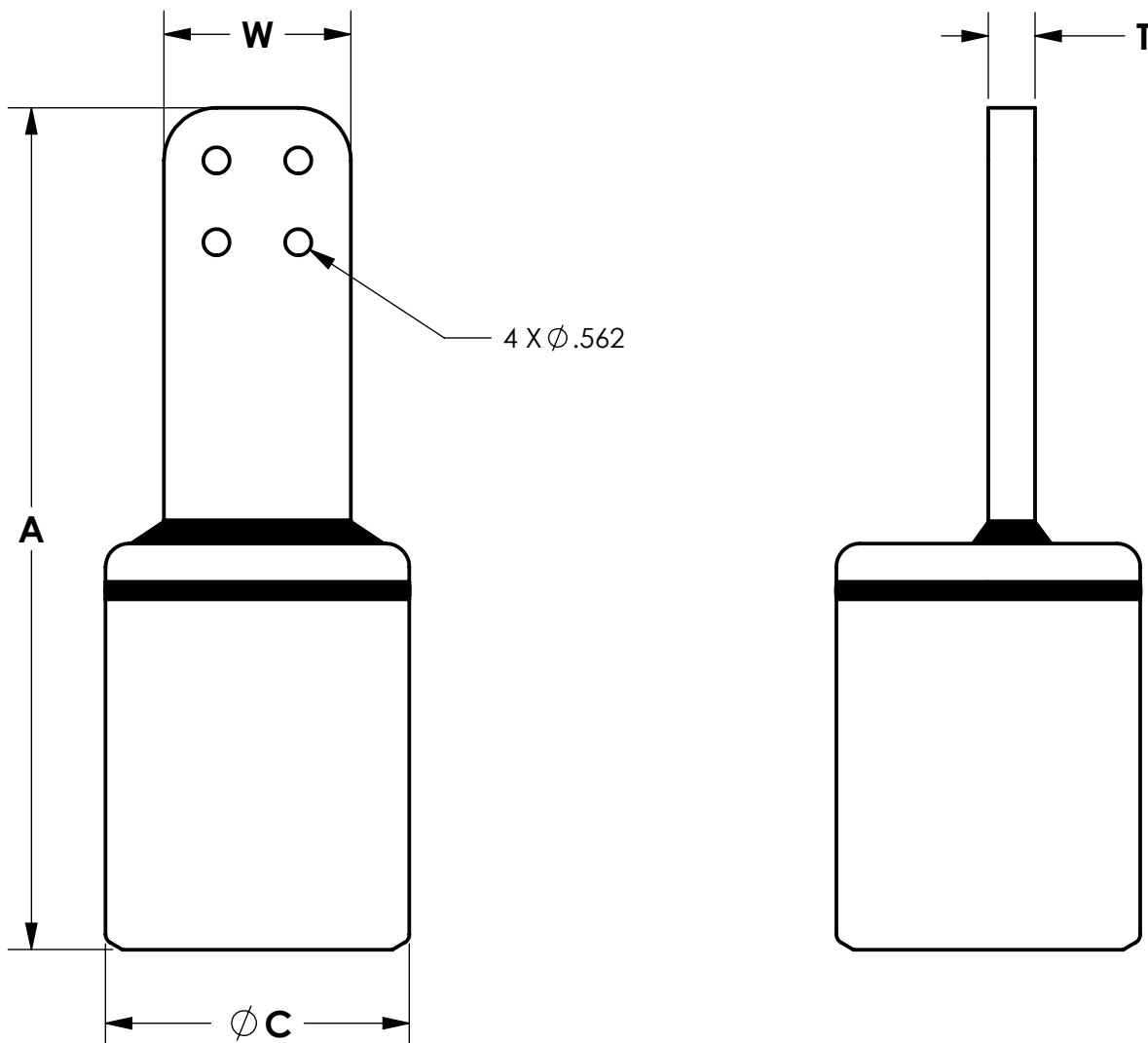


**SIZES 16 THRU 64**



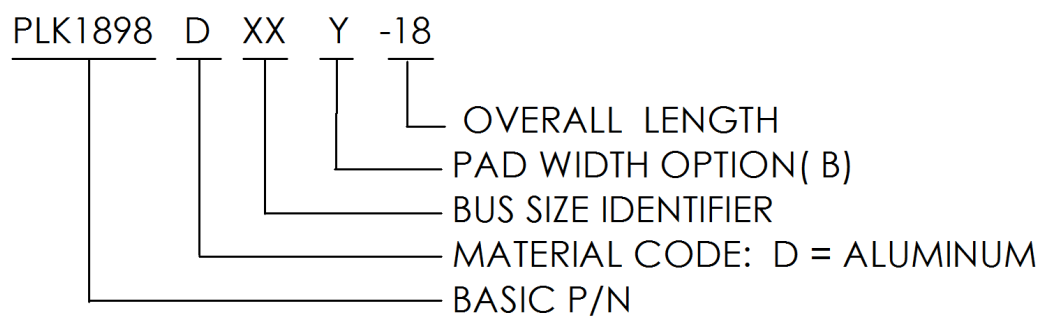
**SIZES 80 THRU 96**



THIS DRAWING AND THE INFORMATION CONTAINED HEREIN ARE THE PROPERTY OF DMCPower AND SHALL NOT BE COPIED, REPRODUCED OR DISCLOSED WITHOUT EXPRESS AUTHORIZATION BY DMCPower.

TABLE: AVAILABLE OPTIONS					
ASSEMBLY PART NUMBER	BUS SIZE (NPS)	A	ØC	T	W
PLK1898D40A-07	2-1/2"	7.000	3.750	5/8"	3.000
PLK1898D16B-18	1"	18.000	2.000	3/8"	4.000
PLK1898D24B-18	1-1/2"	18.000	2.500	1/2"	4.000
PLK1898D32B-18	2"	18.000	3.000	1/2"	4.000
PLK1898D40B-18	2-1/2"	18.000	3.750	5/8"	4.000
PLK1898D48B-18	3"	18.000	4.375	3/4"	4.000
PLK1898D56B-18	3-1/2"	18.000	5.000	3/4"	4.000
PLK1898D64B-18	4"	18.000	5.500	3/4"	4.000
PLK1898D80B-18	5"	18.000	6.500	1"	4.000
PLK1898D96B-18	6"	18.000	8.000	1-1/4"	4.000

LEGEND



THIS DRAWING AND THE INFORMATION CONTAINED HEREIN ARE THE PROPERTY OF DMCPower AND SHALL NOT BE COPIED, REPRODUCED OR DISCLOSED WITHOUT EXPRESS AUTHORIZATION BY DMCPower.