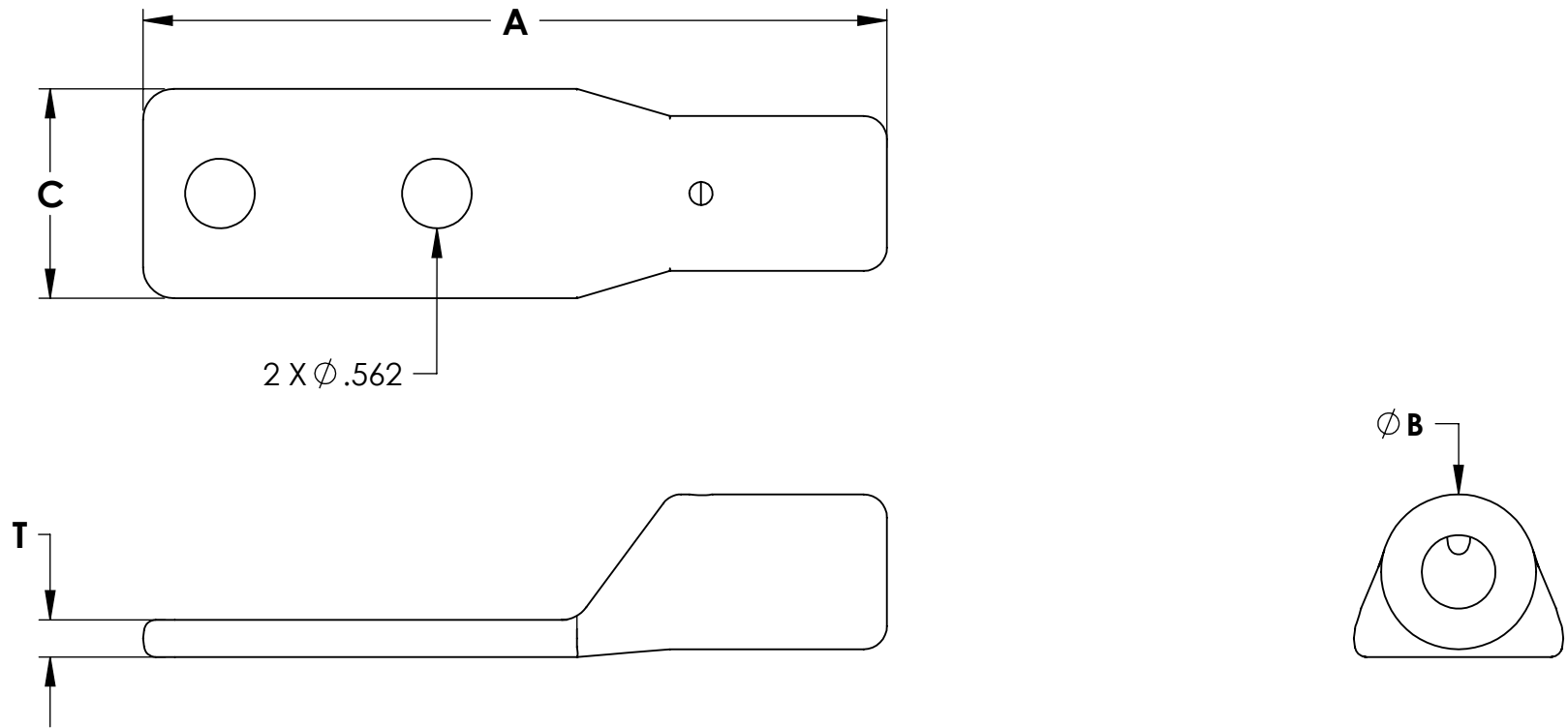
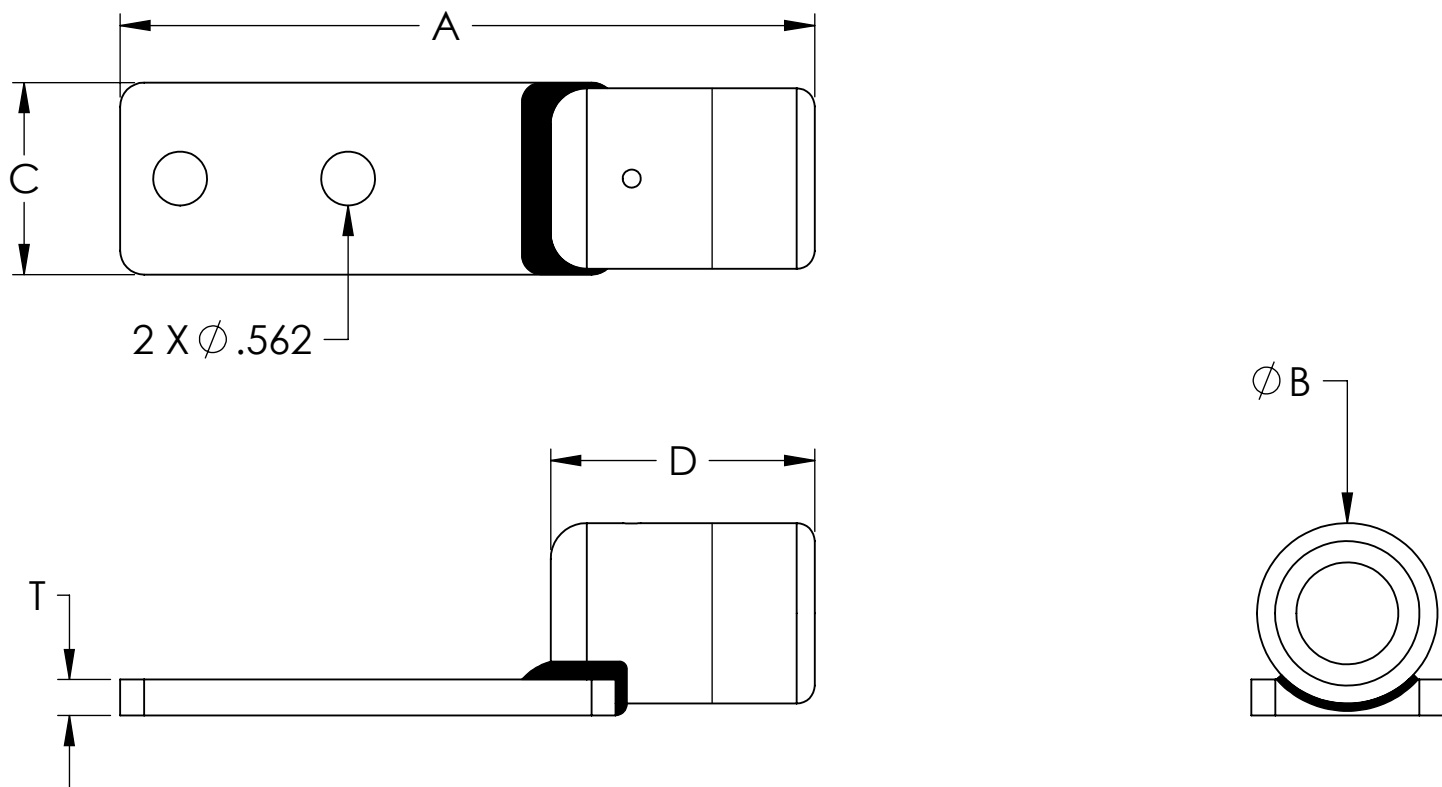


**FIGURE 1**



**FIGURE 2**



THIS DRAWING AND THE INFORMATION CONTAINED HEREIN ARE THE PROPERTY OF DMCPower AND SHALL NOT BE COPIED, REPRODUCED OR DISCLOSED WITHOUT EXPRESS AUTHORIZATION BY DMCPower.

TABLE 1: FIGURE 1 AVAILABLE OPTIONS					
PART NUMBER	A	ØB	C	T	DESCRIPTION
					TAP CONDUCTOR
GC920B04G	5.25	.545	1.00	0.10	# 4 AWG
GC920B02G	5.25	.545	1.00	0.10	# 2 AWG
GC920BL04G	6.00	1.25	1.69	0.30	# 4 AWG
GC920BL04GT	6.00	1.25	1.69	0.30	# 4 AWG
GC920BL02G	6.00	1.25	1.69	0.30	# 2 AWG
GC920B002	6.00	1.25	1.69	0.30	1/0 AWG
					2/0 AWG
GC920B003	6.00	1.25	1.69	0.30	3/0 AWG
GC920B004	6.00	1.25	1.69	0.30	4/0 AWG
GC920B025	6.00	1.25	1.69	0.30	250 MCM
GC920B030	6.50	1.50	1.72	0.40	300 MCM
GC920BL004	6.50	1.50	1.72	0.40	4/0 AWG
GC920B035	6.50	1.50	1.72	0.40	350 MCM
GC920B040	6.50	1.50	1.72	0.40	400 MCM
GC920B050	6.50	1.50	1.72	0.40	500 MCM
GC920B053	6.50	1.50	1.72	0.40	500 MCM ROPELAY

TABLE 2: FIGURE 2 AVAILABLE OPTIONS						
ASSEMBLY PART NUMBER	A	ØB	C	D	T	DESCRIPTION
						TAP CONDUCTOR
GC920B075	6.75	1.88	2.00	2.75	0.40	750 MCM
GC920B100	6.75	1.88	2.00	2.75	0.40	1000 MCM

**LEGEND:**

