

8 X **S** HOLE EQUALLY
SPACED ON ϕ **Ey**
BOLT CIRCLE

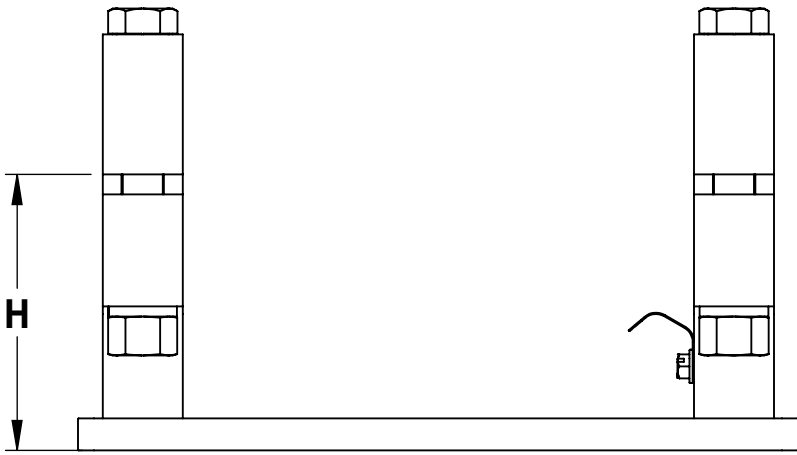
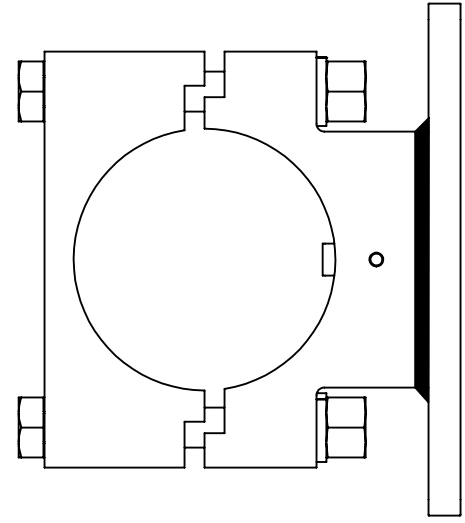
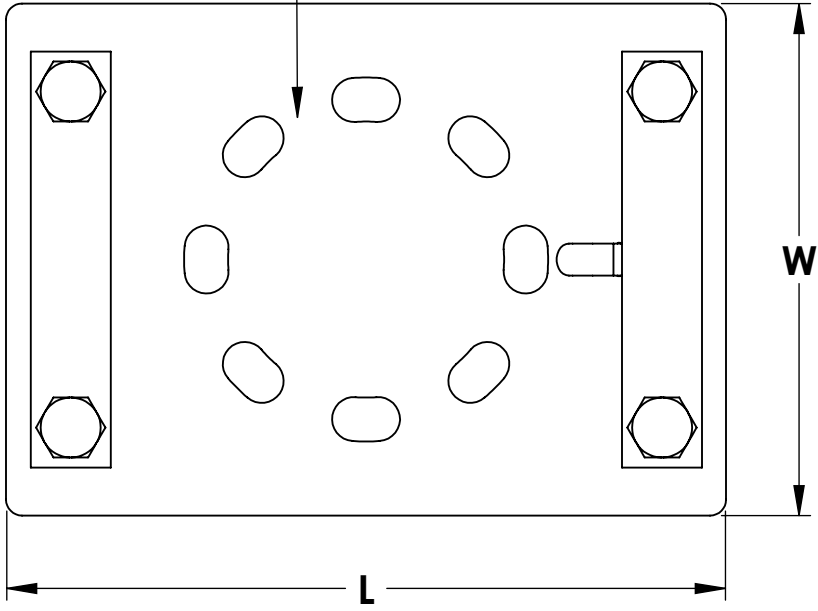
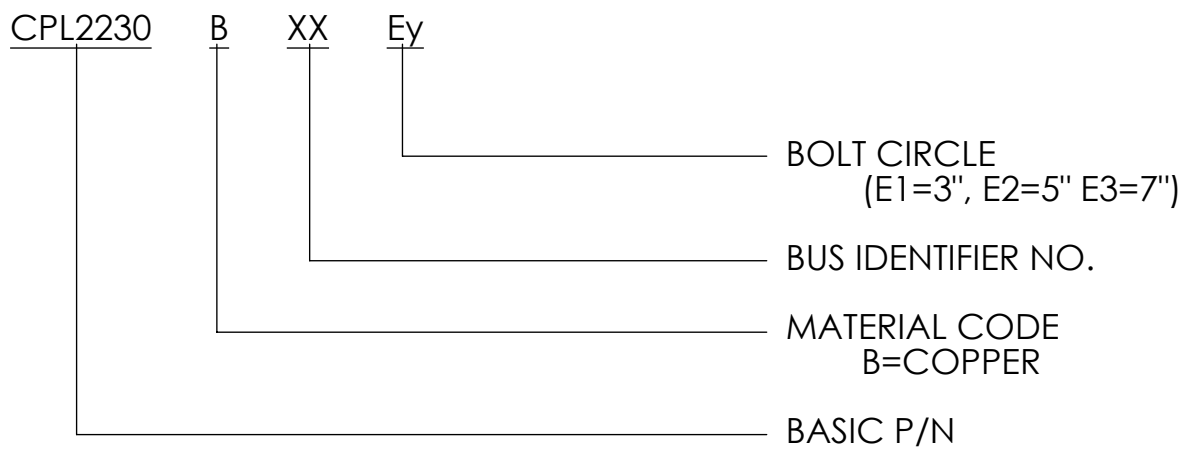


TABLE: AVAILABLE OPTIONS

| ASSEMBLY PART NUMBER | PIPE SIZE (NPS) | ϕ Ey | H | L | S | W |
|-------------------------|-----------------------|-----------|-------|-------|-----------------|------|
| CPL2230B24E2 | 1-1/2 | 5 | 2.500 | 10.25 | 11/16 X 1-1/16" | 7.00 |
| CPL2230B56E2 | 3-1/2 | 5 | 4.000 | 11.25 | 11/16 X 1-1/16" | 8.00 |

LEGEND:



THIS DRAWING AND THE INFORMATION CONTAINED HEREIN ARE THE PROPERTY OF DMCPower AND SHALL NOT BE COPIED, REPRODUCED OR DISCLOSED WITHOUT EXPRESS AUTHORIZATION BY DMCPower.