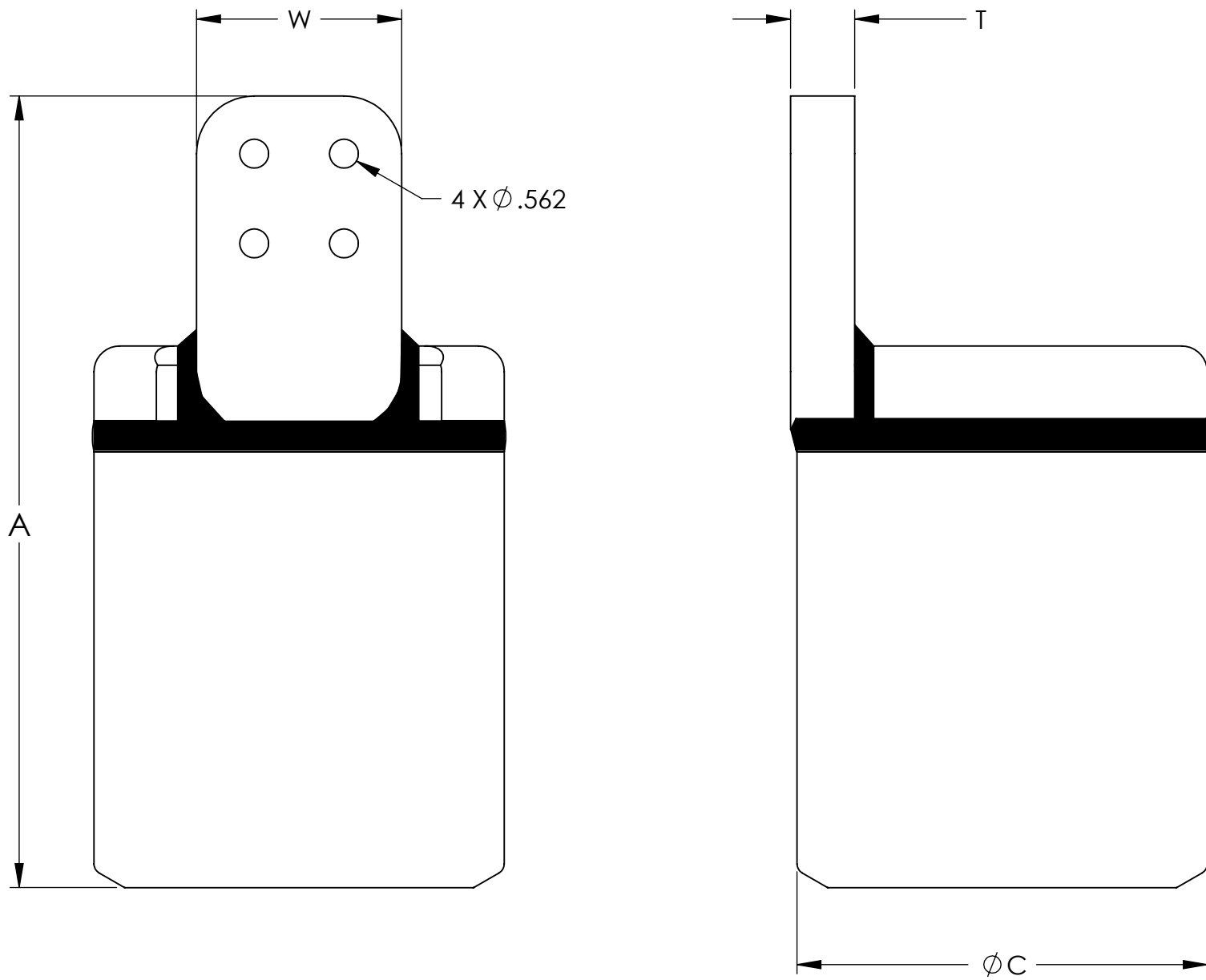


**FIGURE A**  
**SIZES 16 THRU 64**

THIS DRAWING AND THE INFORMATION CONTAINED HEREIN ARE THE PROPERTY OF DMCPower AND SHALL NOT BE COPIED, REPRODUCED OR DISCLOSED WITHOUT EXPRESS AUTHORIZATION BY DMCPower.



**FIGURE B**  
**SIZES 80 & 96**

THIS DRAWING AND THE INFORMATION CONTAINED HEREIN ARE THE PROPERTY OF DMCPower AND SHALL NOT BE COPIED, REPRODUCED OR DISCLOSED WITHOUT EXPRESS AUTHORIZATION BY DMCPower.

TABLE: AVAILABLE OPTIONS						
ASSEMBLY	PIPE SIZE: (NPS)	A	ØC	W	T	
PLK1880D16A	1"	8.38	2.000	3.000	3/8"	
PLK1880D16B				4.000		
PLK1880D20A	1-1/4"		2.500	3.000	1/2"	
PLK1880D20B				4.000		
PLK1880D24A	1-1/2"		2.500	3.000	1/2"	
PLK1880D24B				4.000		
PLK1880D32A	2"	8.88	3.000	3.000	1/2"	
PLK1880D32B				4.000		
PLK1880D40A	2-1/2"		3.750	3.000	5/8"	
PLK1880D40B				4.000		
PLK1880D48A	3"		9.88	4.375	3.000	3/4"
PLK1880D48B					4.000	
PLK1880D56A	3-1/2"	5.000		3.000	3/4"	
PLK1880D56B				4.000		
PLK1880D64A	4"	5.500		3.000	3/4"	
PLK1880D64B				4.000		
PLK1880D80A	5"	14.81	6.500	3.000	1"	
PLK1880D80B				4.000		
PLK1880D96A	6"	15.43	8.000	3.000	1-1/4"	
PLK1880D96B				4.000		
PLK1880D96D				6.000		

**LEGEND**

PLK1880 D XX Ey

PAD OPTION (A OR B)

SIZE (16 THRU 96)

MATERIAL CODE "D" ALUMINUM

BASIC PART NUMBER