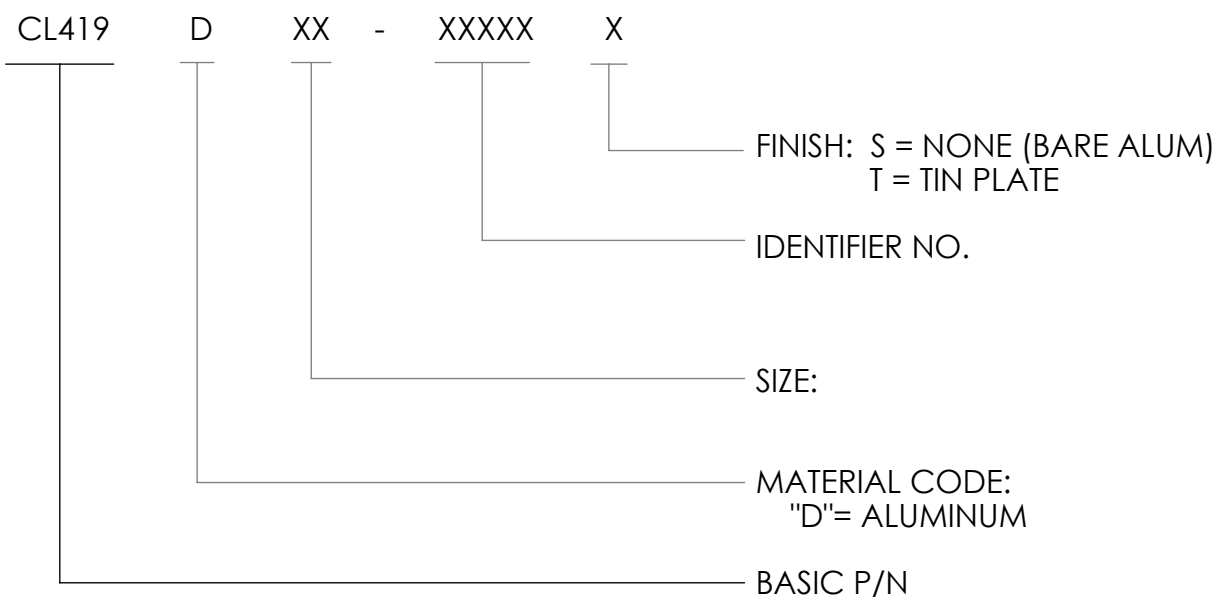
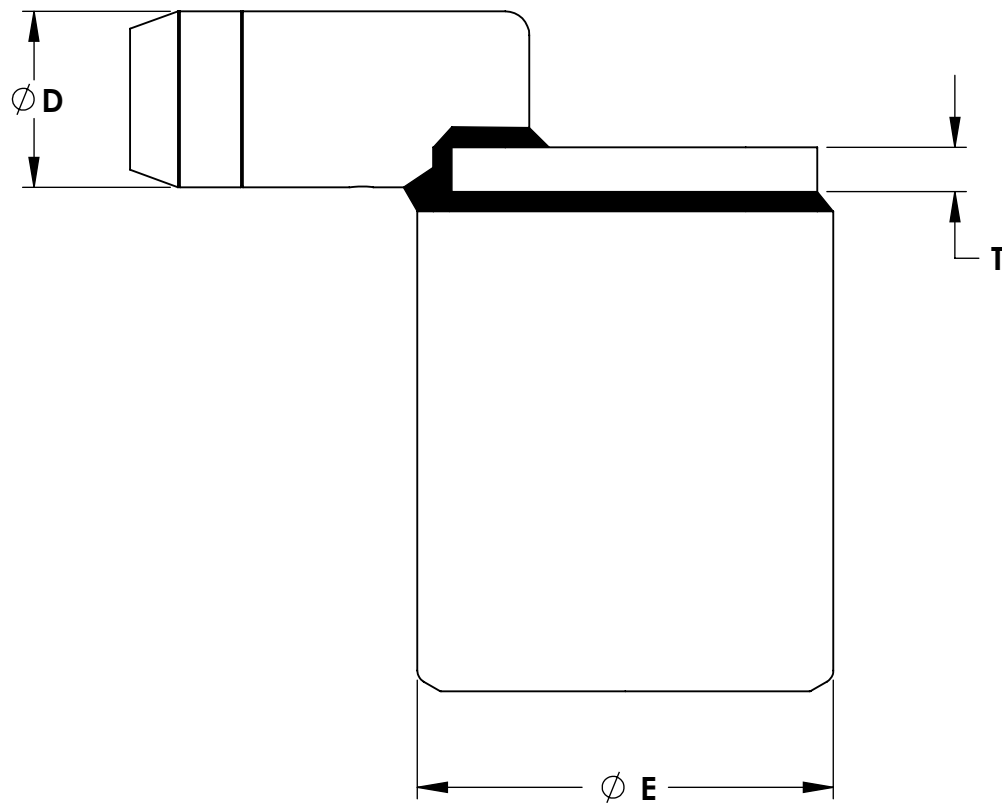
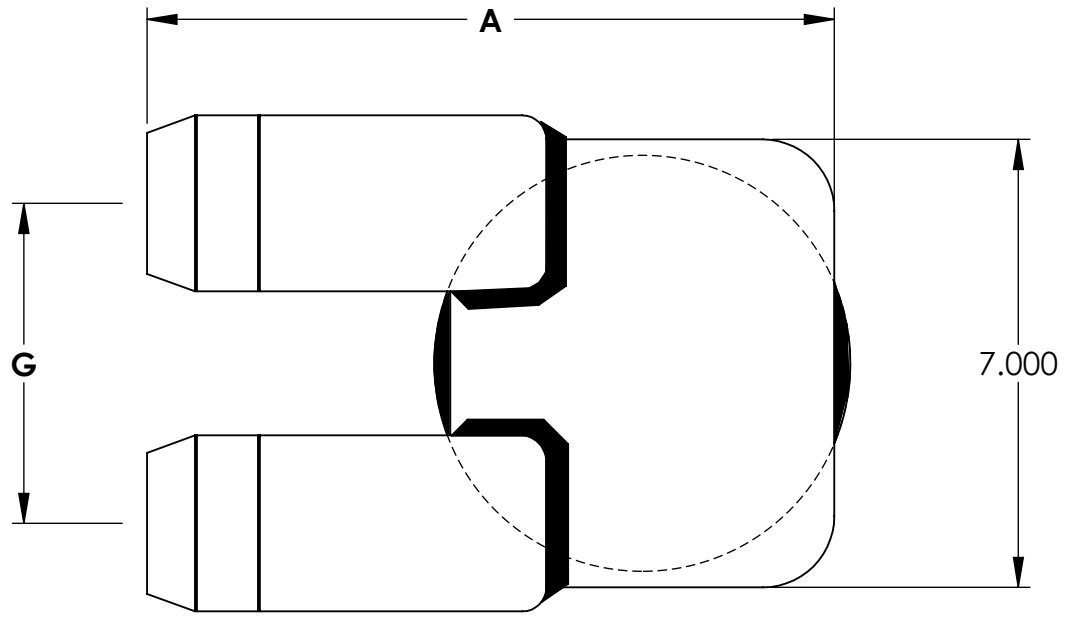


ASSEMBLY PART NUMBER	A	OUTSIDE DIAMETER		G	T
		Ø D	Ø E		
CL419D48-12720X	8.125	2.250	4.375	5.000	.750
CL419D48-25000X	8.740	2.750	4.375	5.000	.750
CL419D64-25000X	10.740	2.750	5.500	5.000	.750

LEGEND



THIS DRAWING AND THE INFORMATION CONTAINED HEREIN ARE THE PROPERTY OF DMCPower AND SHALL NOT BE COPIED, REPRODUCED OR DISCLOSED WITHOUT EXPRESS AUTHORIZATION BY DMCPower.



ASSEMBLY PART NUMBER	A	OUTSIDE DIAMETER		G	T
		Ø D	Ø E		
CL419D80-22500X	10.740	2.750	6.500	5.000	1.00
CL419D80-25000X	10.740	2.750	6.500	5.000	1.00

THIS DRAWING AND THE INFORMATION CONTAINED HEREIN ARE THE PROPERTY OF DMCPower AND SHALL NOT BE COPIED, REPRODUCED OR DISCLOSED WITHOUT EXPRESS AUTHORIZATION BY DMCPower.